

# THE BEEHIVE CATERS

We know that sometimes, an occasion calls for something special  
- that's why we're happy to offer private events and semi-private  
dining options at our establishments and beyond.

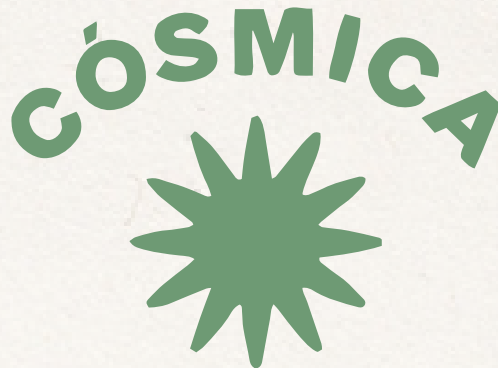
## Our Venues

**COSMICA** at the Revolution Hotel  
*up to 250+ guests in main room,  
170 guests in Plastic Flamingo Room & 125 on our patio*

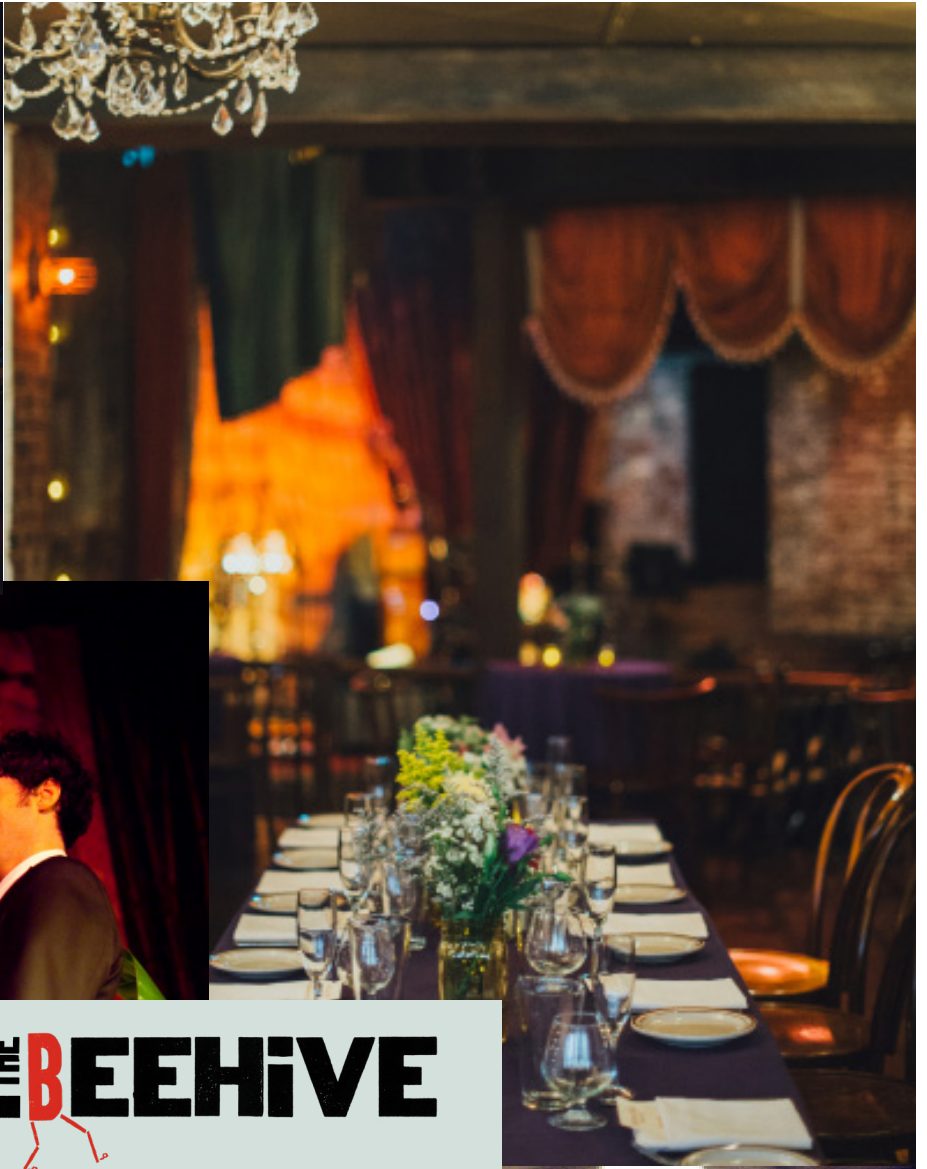
**THE BEEHIVE**  
*up to 400+ guests & 100 on our patio*

**THE CYCLORAMA** at the Boston Center for the Arts  
*up to 1,000 guests*

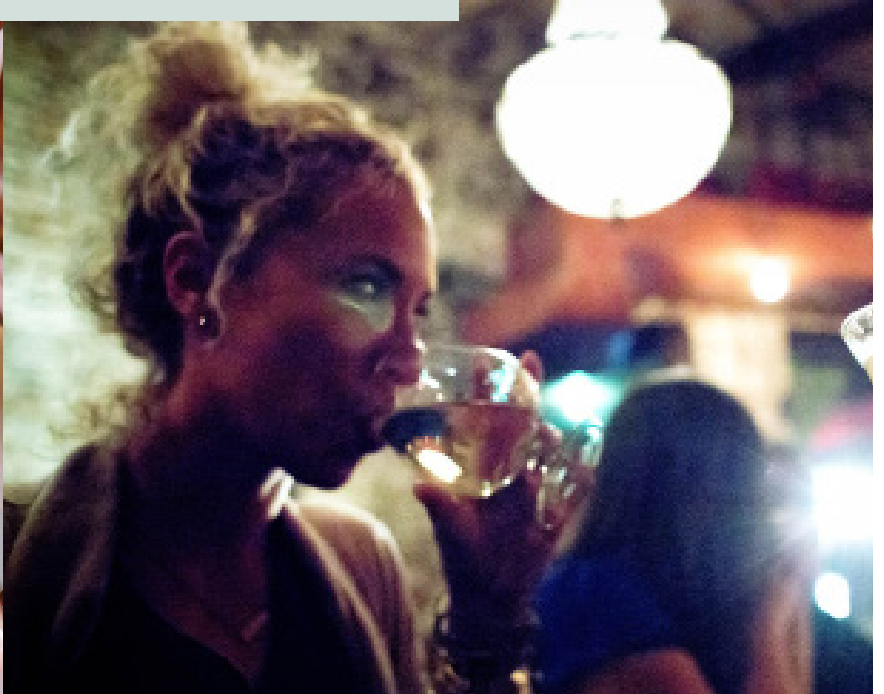
**THE BEEHIVE**  
**EATERY, BAR, LIVE MUSIC**  
541 TREMONT STREET, BOSTON MA 02116  
[WWW.BEEHIVEBOSTON.COM](http://WWW.BEEHIVEBOSTON.COM)



**at THE REVOLUTION HOTEL**  
40 BERKELEY STREET, BOSTON MA 02116  
[WWW.COSMICABOSTON.COM](http://WWW.COSMICABOSTON.COM)



**THE BEEHIVE**



# EVENTS AT BEEHIVE

## COCKTAIL PARTY

OUR COCKTAIL PARTY PACKAGE IS AVAILABLE FOR 2 HOURS OF SERVICE  
WITH A VARIETY OF SUPPLEMENTAL ADD-ON STATIONS.

### PASSED CANAPÉS

#### ONE HOUR RECEPTION:

3 SELECTIONS \$27 PER PERSON, 4 SELECTIONS \$32 PER PERSON

#### TWO HOUR RECEPTION:

4 SELECTIONS \$47 PER PERSON, 5 SELECTIONS \$52 PER PERSON

### STATIONS/PLATTERS

#### MARKET TABLE \$22/PERSON

ARTISANAL CHEESES, CHARCUTERIE, PICKLED VEGETABLES AND SEASONAL CRUDITÉS

#### MEDITERRANEAN TABLE \$24+/PERSON

DIPS, MARINATED VEGETABLES, CHEESES, SALADS

#### SEAFOOD TABLE STARTING AT \$25/PERSON

SEASONAL RAW BAR, CEVCHES, TARTARES, CRUDOS

#### BITE SIZED SNACKS

CHICKEN WINGS, SLIDERS, SKEWERS, RIBS, APPETIZERS

## DINNER OR BRUNCH PARTY

#### FAMILY STYLE DINNER FROM \$75/PERSON

INCLUDES 2 APPETIZERS, 2 ENTREES AND 2 SIDES ALL SHARED AT THE TABLE.

#### BUFFET DINNER FROM \$70/PERSON

INCLUDES 2 ENTREES AND 3 SIDES SERVED AT A STATION.

#### FAMILY STYLE BRUNCH FROM \$55/PERSON

INCLUDES 2 APPETIZERS, 2 ENTREES AND COFFEE/TEA ALL SHARED AT THE TABLE.

## GROUP BEVERAGE PACKAGES

OPTIONAL BEVERAGE SERVICE, PRICED PER PERSON.

BEER, WINE & SANGRIA \$38-TWO HOURS \$48-THREE HOURS

ADD HOUSE SPIRIT & COCKTAILS +\$10 PER HOUR

TOAST OF BUBBLY \$10/PERSON





# CÒSMICA

## MEXICAN FOOD & BAR



# EVENTS AT CÒSMICA

THE  
REVOLUTION  
HOTEL

## COCKTAIL PARTY

OUR COCKTAIL PARTY PACKAGE IS AVAILABLE FOR 2 HOURS OF SERVICE  
WITH A VARIETY OF SUPPLEMENTAL ADD-ON STATIONS.

### Aperitivos

#### ONE HOUR RECEPTION:

3 SELECTIONS \$24 PER PERSON, 4 SELECTIONS \$30 PER PERSON

#### TWO HOUR RECEPTION:

4 SELECTIONS \$38 PER PERSON, 5 SELECTIONS \$45 PER PERSON

### Stations

**GUACAMOLE, CHIPS, SALSA** \$14/PERSON GF VG  
RED ONION, SMOKED JALAPEÑO, QUESO FRESCO, TOMATO, PUMPKIN SEEDS

**SPANISH & MEXICAN CHEESE PLATTER** \$20+/PERSON  
CHEESE, CHARCUTERIE, PICKLED VEGETABLES AND SEASONAL CRUDITÉS

**ADD CHARCUTERIE** \$6 TO \$12+/PERSON

**SEAFOOD & CEVICHE BAR** STARTING AT \$25/PERSON  
INCLUDES 2 ITEMS, FOR EXAMPLE: MEXICAN SEAFOOD COCKTAIL, TUNA CEVCHE  
OR SEASONAL FISH CRUDO

#### BITE SIZED SNACKS

CHICKEN WINGS, QUESIDILLAS, SKEWERS, TAQUITOES

## DINNER PARTY

**FAMILY STYLE DINNER** FROM \$65/PERSON  
INCLUDES 2 APPETIZERS, 2 ENTREES AND 2 SIDES ALL SHARED AT THE TABLE.

**TACO BUFFET PARTY** FROM \$55/PERSON  
INCLUDES 3 PROTIENS, TWO SIDES, SALSAS

**EXECUTIVE BUFFET DINNER** FROM \$75/PERSON  
INCLUDES 2 ENTREES AND 3 SIDES SERVED AT A STATION.

## GROUP BEVERAGE PACKAGES

OPTIONAL BEVERAGE SERVICE, PRICED PER PERSON.

BEER, WINE & SANGRIA \$38-TWO HOURS \$48-THREE HOURS  
ADD HOUSE SPIRIT DRINKS AND MARGARITAS +\$10 PER HOUR



## STAFFING

We will create a customized staffing proposal based on the particulars of your event. Including the duration, guest count and complexity of the menu and event logistics. Staffing costs do not count toward Food & Beverage (F&B), minimums and associated administration fees and service charges.

## EVENT PLANNING

Event planning services can be provided, in addition to standard staffing, at a rate of \$125/hr.

## LIVE MUSIC ENTERTAINMENT

We can book and coordinate the most appropriate live performers for your event utilizing our network of top-tier artists. Fees for use of our live music facilities and equipment range from \$500-2,000+. In most cases, a sound engineer will be required for live performance at a rate of \$150/hour.

## WEDDING CEREMONY FEE

Staffing and logistical fee for an onsite wedding ceremony are \$5,000 in addition to any required furniture rentals.

## ADMINISTRATIVE FEE

All events are subject to a 9% administration fee which is based on the full cost of the event. The administrative fee is not a gratuity and serves to offset ancillary expenses associated with the planning and administration of this event and helps ensure a better wage for our non-tipped team members.

## SERVICE FEE OR TIP

All events are subject to an 18% service charges (taxable) which is based on full food, beverage and room rental costs. This fee is distributed to wait staff employees, service employees, or service bartenders. The service fee can be waived if the client chooses to tip (non-taxable) service staff 18% or greater. Please let your event manager know which option you choose.

## VALET PARKING

Valet services can be arranged in advance of your event. Guests may also park in several convenient, nearby public garages.

- Dartmouth Street Garage, 126 Dartmouth Street, Boston, MA 02116
- Pilgrim Parking, 131 Dartmouth Street, Boston, MA 02116 (0.4 mi, 9 min)

## TAX

A 7% State of Massachusetts & City of Boston Meals & Beverage Tax will be added to the total event bill.

## DEPOSIT & PAYMENT SCHEDULE

The deposit is required to reserve any of our available private spaces. 25% of the F&B Minimum will be charged at the time of reservation. A second 50% deposit of your estimated total event bill is required 14 days prior to the event. A third 85% deposit of your total event bill is due two days prior to the event. Final payment for the full 100% total event bill is required the day of the event. Personal and business checks are welcome.

## CANCELLATIONS

Buyouts and large groups are subject to the following cancellation charges:

- 61-90 days prior: 25% of Estimated Total Event Cost
- 31-60 days prior: 50% of Estimated Total Event Cost
- 15-30 days prior: 70% of Estimated Total Event Cost
- 8-14 days prior: 85% of Estimated Total Event Cost
- 3-7 days prior: 95% of Estimated Total Event Cost
- 0-2 days prior: 100% of Estimated Total Event Cost